



ApolloOS

OS User Guide



APOLLO
TEAM

Apollo OS basics

How to get started

The V4 Standalone offers a unique combination of computing power, usability and powerful OS. **Apollo OS is the open-source future operating system for Amiga computers.**

Apollo OS GUI is not based Workbench but desktop replacement called Directory Opus Magellan II 5.82. It allows you to control your V4+ by using a mouse and the keyboard.

Please mind that Amiga mouse navigation is slightly different from using a mouse on a PC.

Apollo OS is using multitasking which is the ability to run several independent programs at one time. It is easy and quick to switch between tasks when you need to.

This guide describes Apollo OS and how to use it's basic functions.

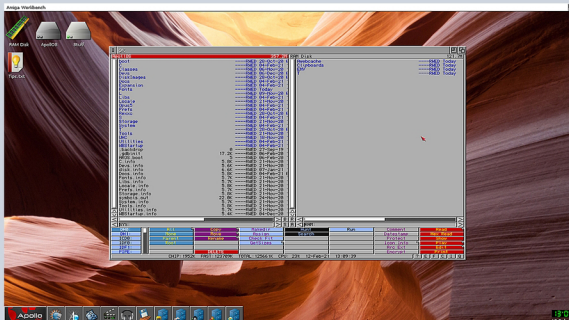


Do more on your desktop

Apollo OS is packed with advanced features that make it easy to quickly change settings and customise the info you want to get about your work — straight from your desktop.

Tools for everything you want to do

Your Vampire Standalone comes with built-in programs that let you do a variety of tasks - and you can customize the OS to fit your preferences.



More to discover on your Vampire

The Vampire makes it easy to be entertained - from watching the movies to listening to your high-quality music collection or playing amazing games!

Apollo OS basics

Using this guide

This guide provides instructions for using your Apollo OS. Even if you have used an Amiga before, please read the entire guide to become familiar with the general operations of your Vampire and the OS. Once you learn the basics, this guide can serve as a reference.

Let's look at the desktop:

Desktop Icons

Here you can access your RAM Disk and your partitions. RAM Disk is a virtual drive that serves as a temporary storage device (unlike RAD Disk). All your partitions can be accessed here.

Title Bar

Located in the top portion of the screen, usually as a white bar with text. Allows users to change the settings or configuration of the system.

Your gateway to the Apollo OS.

Title Bar Menus

Your mission control of the Apollo OS. Here you can access all the settings and options DOpus offers. Like changing background, managing icons or enabling networking and more...

Window Gadgets

Gadgets help control the window enabling you to close or minimize.

- Close Gadget** - closes the window
- Zoom Gadget** - maximizes the window
- Depth Gadget** - sends a window to the back or brings it to the front. Toggles window back and forth.

Start Menu

Quick access to the basic functions like themes (Karma), networking, CLI console or reboot.

Application dock

Quick access to frequently used applications like file manager, media players, or web browser.

Drawer dock

Quick access to frequently used File Drawers like office, music, games or Internet.



More on your desktop

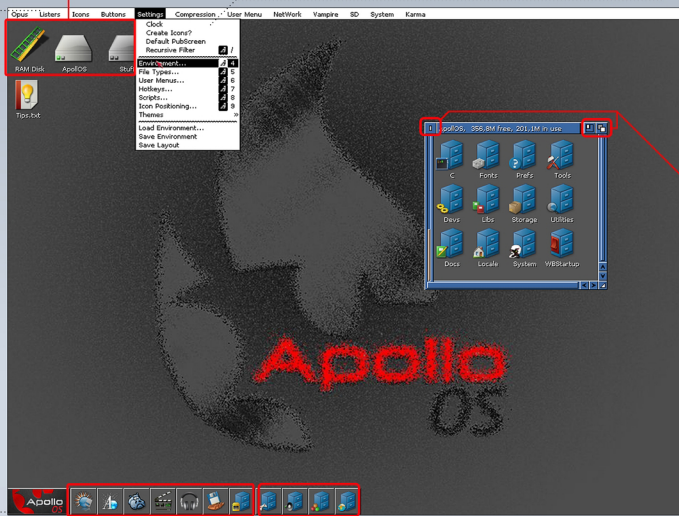
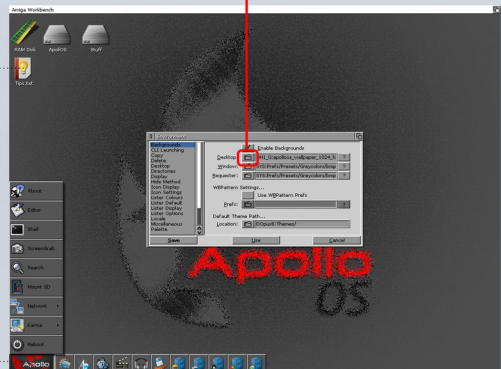
Tips text file contains helpful information including hotkeys and networking.

By clicking on Start Menu button the menu will pop-up. Here you can find:

- Editor** - simple and efficient text editor
- Shell** - opens a console (Command Line Interface)
- ScreenGrab** - allows you to take screenshots
- Search** - helps you find the file you missed the most
- MountSD** - mounts microSD card.
- Network menu** - networking control center
- Karma menu** - select a theme here
- Reboot** - resets the Vampire

Quick Tip - how to change background wallpaper

Using a Title Bar, open Settings/Environment. A window will appear. Click 'Backgrounds' and then the little drawer icon (highlighted).



Apollo OS basics

Get to know your desktop

Magellan Lister Menu

Includes access to functions like copy as or move, advanced file operations, path options, device list and selection of source and destination.

System Menu

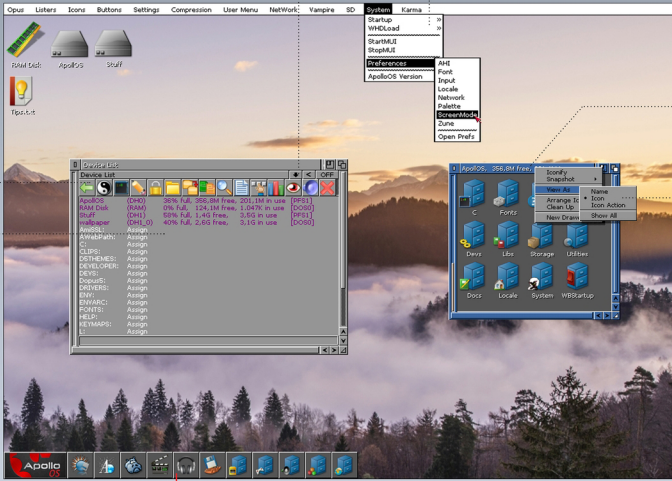
Here you can edit Startup-Sequence, modify WHDLoad, enter system Prefs or check Apollo OS version.

Magellan Buttons

With these buttons you can perform many popular operations like renaming the file, copying to another window, change file attributes or display pictures.

Magellan Lister

Dedicated window with additional options. Double click anywhere on desktop opens the Device Lister (pictured).



Lister Menu

By left click on lister bar or background you get access to menu where you can choose view mode, clean up icons, make new drawer or iconify the whole lister.

Magellan View Modes

Magellan allows to see listers in three different modes: icon only, icon with action buttons and name (detail view).

Name - displays file names in text mode (detailed view)

Icon - standard icon view

Icon Action - enables Magellan buttons

File Explorer DOpus 4.17 is used to navigate and manage the drives, folders, and files on your computer.	Web Browser AWeb is a software program to present and explore content on the World Wide Web (HTML 3.2).	Module Player HippoPlayer is the most famous multi-format audio player, enjoy the sound of 80's!	Video Player RIVA is the fastest MPEG player available allowing you to watch movies and video clips.	Music Player AmigaAMP is a MPEG audio player allowing you to listen to high-quality MP3.	Virtual Disk DiskImageGUI lets you mount virtual devices like ADF/ISO files or HDF harddisk images.	Office Drawer Including text editors, PDF reader, spreadsheet program and raster graphics design tools.	Games Drawer A library of over 80 games, from Lotus trilogy to Battle Squadron.	Music Drawer Careful selection of music players, audio files and music creation tools.	Developer Drawer C compiler, assembler, Amiga Development Environment, DevPack, Pascal IDE and AMOS Pro.	Internet Drawer E-mail client, web browsers, IRC client and wide choice of internet radio stream links.
--	---	--	--	--	---	---	---	--	--	---

Dock icons explained

- OFF** - Source - Sets the window as a source (copy from), destination or excludes the lister from operations.
- <** - Path - Displays and refreshes root directory parent directory content. Also lists all the devices here.
- ↓** - Menu - Allows you to run all the lister functions and includes all the buttons below.

Device Lister

	Back - reverts to the parent directory.		Search - file finder with pattern option.
	Device List - list of devices / window content toggle.		New text - creates new text file.
	Shell - opens Command Line Interface console.		Select all - marks all files or drawers as selected.
	Rename - change name of the drawer or file.		Size - calculates the disk space.
	Attributes - change attributes of a file or multiple files.		Image View - switches to picture view.
	New dir - create new drawer.		File player - plays the media file.
	Copy - duplicates the file or a drawer.		Delete - deletes the file or drawer.
	Move - moves a file or drawer to destination location.		Scroll - scrolls displayed buttons if window size is not wide enough.

List of hot-keys:

Keyboard	Function
Vampire V4 Keyboard Shortcuts	
Left-Ctrl	Soft Reset (C-A-A)
Windows-Key	
Right-Ctrl	Scanlines (toggle)
F11	
F12	Turtle Mode (toggle)
Print	PAL 576p - 50Hz (AGA)
Scroll Lock	NTSC 480p - 50Hz (AGA)
Pause	NTSC 480p - 60Hz (AGA)

Apollo OS Keyboard Shortcuts	
LCtrl+LAlt+m	Mount SD
LCtrl+LAlt+d	Flush SD
LCtrl+LAlt+n	Network ON
LCtrl+LAlt+u	NewShell
RCtrl+e	Dopus Requester
LAmiga+e	Exchange
End	WHDLoad Quit Key
LCtrl+s	SnoopDos